

The pace of change in knowledge and learning management can be relentless. Administrators face the difficult task of trying to manage multiple versions of content, workflows, and reporting within the organization. SumTotal Content Versioning relieves the administrative burden around tracking multiple versions by automating the control and lifecycle of learning activity versions. Working with SumTotal Learning Management, this product links multiple versions of a learning activity together with automated workflows and notifications.

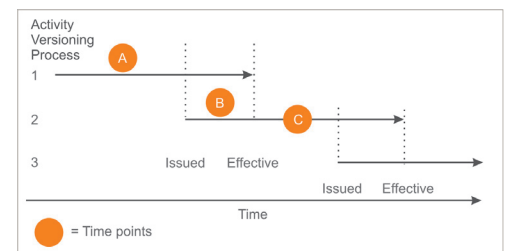
### Benefits

- Automatically notify users when a new version is available
- Reduce administration time required to duplicate learning activities in the system
- Reduce the potentially enormous amount of effort required by managers, HR and training to track and ensure completion of training, considering emails, follow-ups and documentation
- Easily track version and required training:
  - Track versions of learning activities at all lifecycle stages: Draft, Issued, Effective and Retired
  - Track whether re-training is required for a particular version change
  - Track the dates by which learners must complete training or retraining
  - Track what versions have been taken by each learner

To see more graphically how SumTotal Content Versioning reduces an administrative burden, see the following diagram.

**Time Point A** – New Learning Activity is created. Users requiring completion of this activity are assigned the activity with a specified date to complete the activity.

**Time Point B** – A new version of the activity is created. Since this new version replaces the old version, the new version has several implications depending on the user's status with the previous version.



### Completed Users on the Previous Version:

- User may be assigned this new version to complete by a specific date
- Users may be assigned and even registered in the new version
- User is waived on the new version

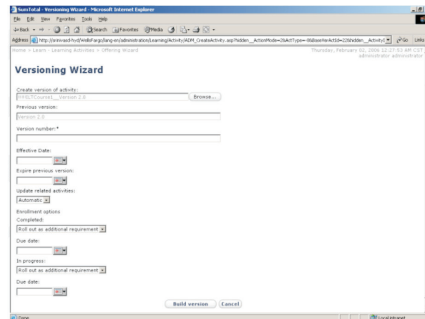
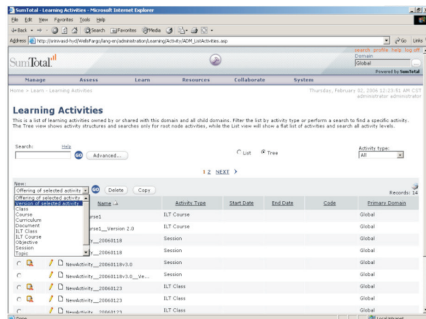
### In Progress Users on the Previous Version:

- User may be assigned this new version to complete by a specific date
- Users may be assigned and even registered in the new version and cancelled in the previous version
- User is waived on the new version

### New Users (have not completed the previous version)

- User is assigned to previous version and new version
- User is assigned new version only

**Time Point C** – Only the new version of the Learning Activity is available. Users requiring completion of this activity are assigned the new activity version with a specified date to complete the activity.



**About SumTotal** // SumTotal Systems, Inc. is the global leader of strategic Human Capital Management (HCM) solutions that provide organizations with a new level of visibility to help make more informed business decisions and accelerate growth. Recognized by industry analysts as the most complete solution, SumTotal provides full employee lifecycle management, including a core system of record, from a single provider for improved business intelligence. The company offers customers of all sizes and industries the most flexibility and choice with multiple purchase, configuration, and deployment options. We have increased the performance of the world's largest organizations including Sony Electronics (NYSE: SNE), AstraZeneca (NYSE: AZN [ADR]; London: AZN), Amway (KUL:AMWAY), Seagate (NYSE: STX),

For more information, or to request a demo, please call +1 (866) 768-6825 (US / Canada), +1 (352) 264-2800 (international) or visit [www.sumtotalsystems.com](http://www.sumtotalsystems.com)

#### Corporate Headquarters

SumTotal Systems, Inc.  
2850 NW 43rd Street  
Suite #200  
Gainesville, FL 32606 USA  
Phone: +1 352 264 2800  
Fax: +1 352 264 2801

#### EMEA

SumTotal Systems, UK  
59-60 Thames Street  
Windsor, Berkshire  
United Kingdom, SL4 1TX  
Phone: +44 (0) 1753 211 900  
Fax: +44 (0) 1753 211 901

#### APAC

SumTotal Systems India Pvt. Ltd.  
7th Floor Maximus Towers  
Building 2B, Mind Space  
Raheja IT Park, Cyberabad  
Hyderabad, AP- 500081, India  
Phone: +91 (0) 40 6695 0000  
Fax: +91 (0) 40 2311 2727

© 2011 SumTotal Systems, Inc. All rights reserved. SumTotal, and the SumTotal logo, are registered trademarks or trademarks of SumTotal Systems, Inc. and/or its affiliates in the United States and/or other countries. Other names may be trademarks of their respective owners. 11\_0922UN